

# Animals Including Humans

## Fact Cards

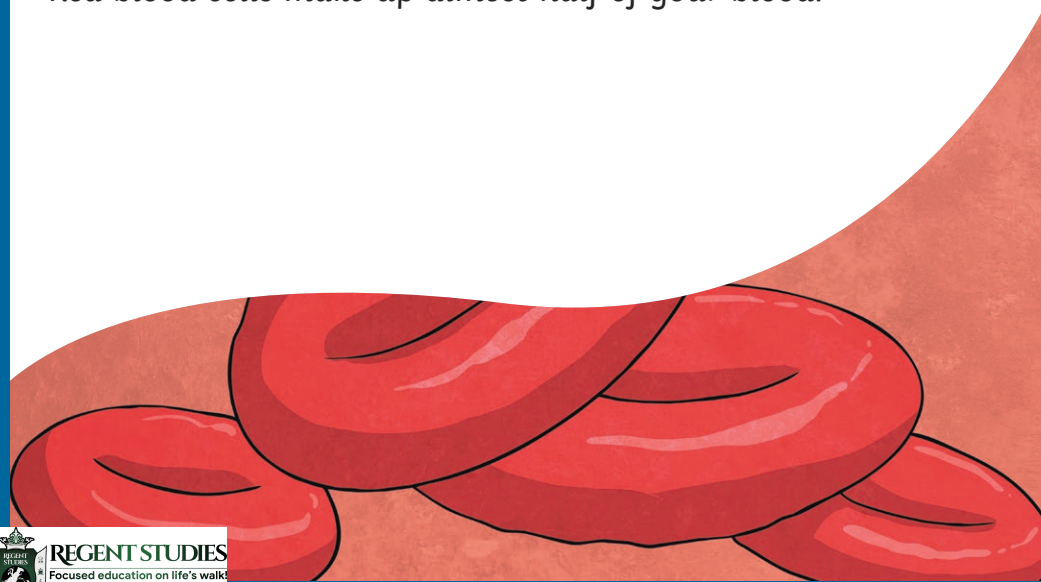
### Animals Including Humans

Not all blood is red. Crabs have blue blood and earthworms and leeches have green blood!



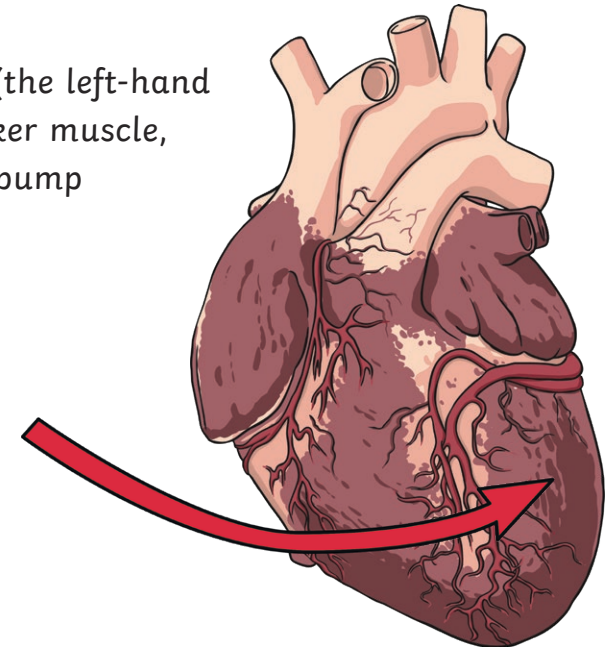
### Animals Including Humans

Red blood cells make up almost half of your blood.



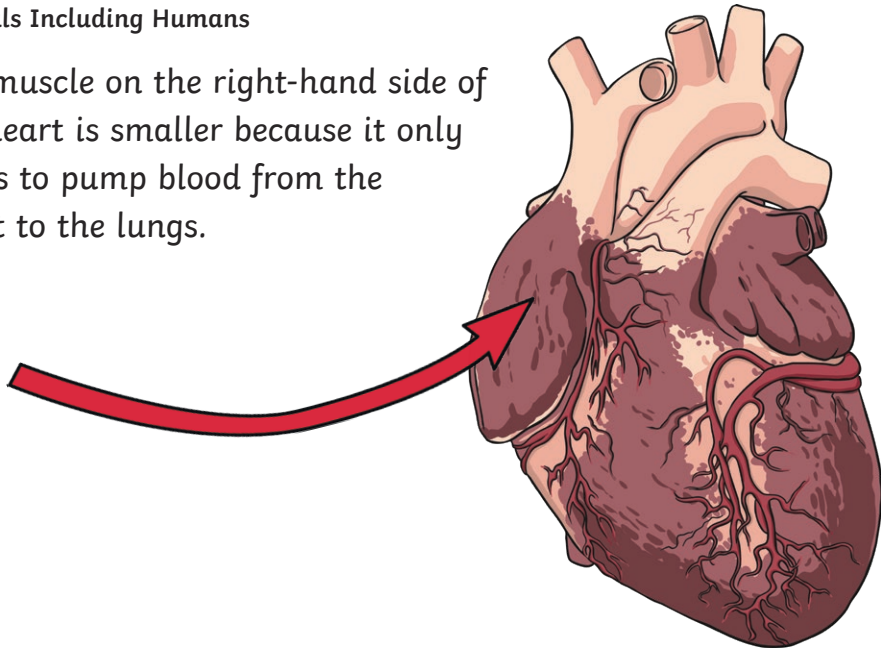
### Animals Including Humans

One side of the heart (the left-hand side) has a much thicker muscle, because this needs to pump blood all around the body.



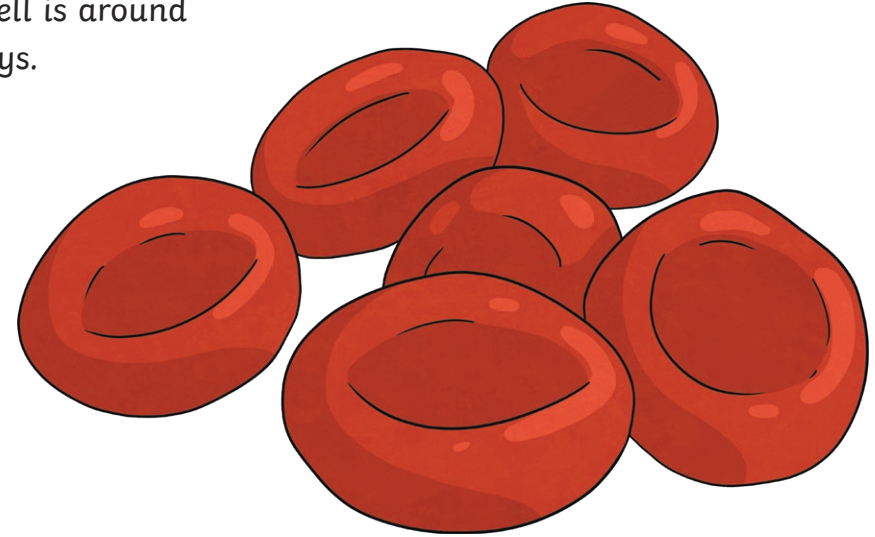
Animals Including Humans

The muscle on the right-hand side of the heart is smaller because it only needs to pump blood from the heart to the lungs.



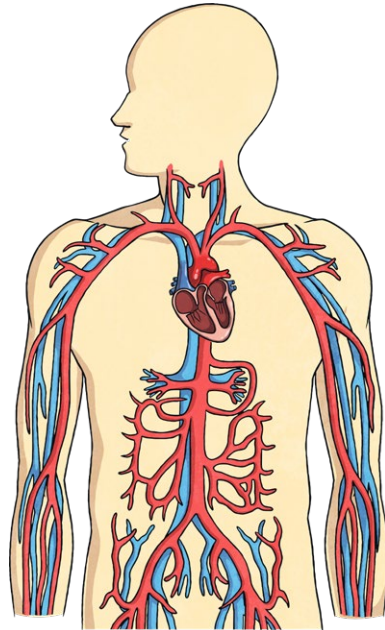
Animals Including Humans

The lifespan of a red blood cell is around 120 days.



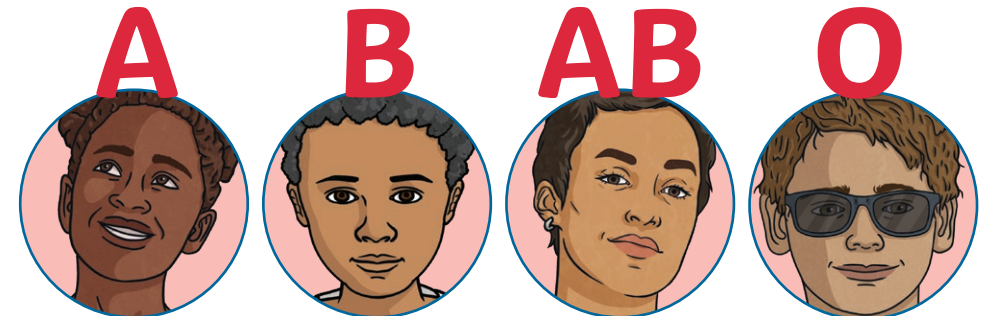
Animals Including Humans

Your veins, capillaries and arteries would stretch for more than 60,000 miles if laid out flat.



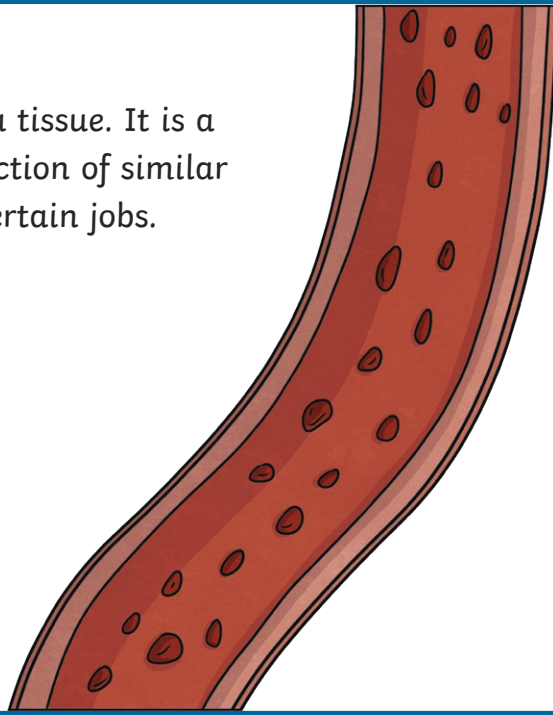
Animals Including Humans

There are four main blood types. A, B, AB and O. The O+ blood type is the most common and the AB- blood type is the rarest.



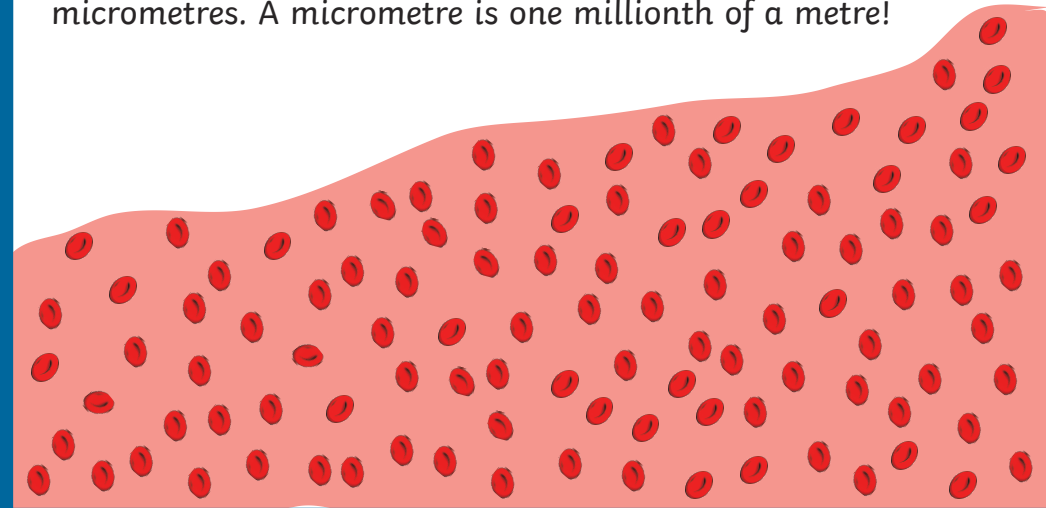
Animals Including Humans

Blood is considered to be a tissue. It is a tissue because it is a collection of similar specialised cells that do certain jobs.



Animals Including Humans

Red blood cells are so small that we don't measure them in cm or mm. They are approximately  $8\mu\text{m}$  across, which means 8 micrometres. A micrometre is one millionth of a metre!



Animals Including Humans

Oxygenated blood is bright red, while deoxygenated blood is dark reddish-purple.

